

Ardoch News

Christmas edition



December 1998
Volume 1 Issue 3

In this Issue

Living in East St Kilda
Holding up in Europe **1**

Ardoch history
Body Corporate
Grounds and gardens **2**

Letters
What's on
Words that should exist!
Wits dictionary **3**

Ardoch living
Useful contacts **4**

A peaceful,
safe, joyous
and friend-filled
Christmas
to all at
Ardoch Village

ARDOCH, THE VILLAGE GREEN
EAST ST KILDA 3183

Living in East St Kilda

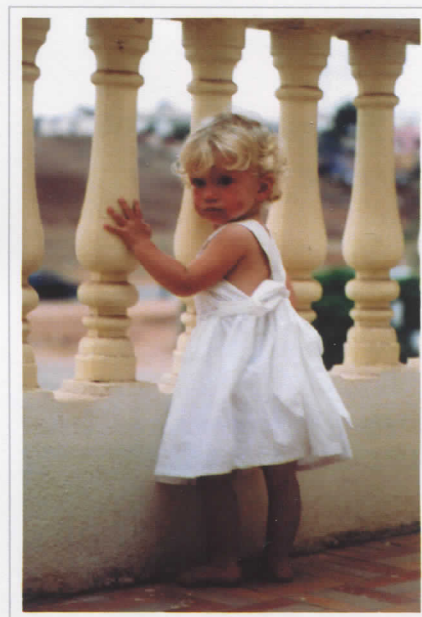
Some Ardochians participated in a local consultation organised by Freda Erlich, our local Councillor, on 20th August and discussed what they like and don't like about living in East St Kilda. People said they liked being close to shops, the Bay and public transport; liked the bohemian and cosmopolitan atmosphere of the area, with its diverse and multicultural population; and liked the open spaces, parks and recreational facilities. What they didn't like was the traffic congestion, loss of historical buildings in favour of shops like Red Rooster, urban design that didn't fit well with the streetscape, and the regulations about heights and overshadowing. They said they wanted to protect the character of the neighbourhood (and in particular the scale, height and the density of buildings), encourage energy efficient designs, and get more help with the planning system. For more information or to make a comment, call Freda on 9534 9192.



Notable Ardoch residents,
Tiffany & Bacchus

Framed 8x10 colour photos

Get an existing photo enlarged and framed for Christmas. Dark walnut wooden frames, excellent quality only \$30! Call Rebekah Farr (Whistlers Cottage) on 9510 4551 and bring over the photo.



Madeleine

Holding up in Europe

by Ardoch's overseas correspondent

Alison, Vincent and now-toddler Madeleine have decided to give up their nomadic existence and are seeking to settle in Toulouse in France. Madeleine is developing an extensive vocabulary and will soon be able to file correspondent reports in French as well as English. Her mother reports she is watching her figure (see photo) and has put on only 1.5 kg since leaving Australia.

Ardoch history

Phoenix in the 70's

The early 1970s were heady days (in more ways than one). The political upheavals of the late 60s (Vietnam, the Paris student riots, Prague spring, etc etc) turned into a social revolution which radically changed the roles of men and women, and relationships between the younger generation and their parents.

David Zomer, who runs our local plant nursery Petal Pushers, was a resident of Phoenix Place in Ardoch during 1972 and 73. "There were about 30 or 40 young people living in various flats in Ardoch at that time, and we used to go down and party on the village green all the time." David says it was a great place to live, close to Chapel St, fairly cheap and a real sense of community. "There was always something going on and people would just pop in to borrow this or that. I met my wife Anne at Ardoch and we're still together."



What about Whistler's?

Some of you may wonder about the origin of the names of the Ardoch buildings. Part of the answer lies with

the creative input of Jackie Burgess. Jackie was part of the team at Wilson Pride Real Estate who helped market Ardoch when it was first offered for sale a few years ago following the redevelopment.

KAYE RUBI HAIRDRESSING



79A CHAPEL STREET WINDSOR 3181
TEL: 9529 8220 · FAX: 9529 8811
EMAIL: kayerubi@netspace.net.au

SHOP 9 TATLER PARADE
LAUNCESTON 7250 TASMANIA
TEL: 03 6334 0611

Jackie suggested a whole raft of names in four categories: plants, birds, towns and trees. She also suggested buildings could be named after English villages, or after famous people associated with Ardoch - Melba, Moncrieff, Petrov and Petrova, for example.

These ideas clearly influenced the final list of names. We have a bird theme (Kestrel, Kingfisher, Phoenix, Lark, Dove, Bellbird, Bluebird, Ibis, Red Robin) and a plant theme (Magnolia Mansions, Cottonwood, Raewood) and a famous historical name (Wardell House). But what about Whistler's Cottage???

Body Corporate

As the halfway point the financial year approaches, we can report that the basic Body Corporate budget is on target, and heading towards a small surplus.

As agreed at the last AGM, quotes for paving the paths are being sought. When this work goes ahead, there will need to be a special levy which looks to be around

30-35% of the standard annual fee per unit. In the longer term, there may also need to be a special levy to cover repairs to some of the older roofs - but your committee will keep you informed on this.

Also, everyone should have received a notice about parking (urrghh!!!). Your long suffering Body Corporate committee has negotiated a deal with Port Phillip City Council whereby people who don't abide by the parking rules at Ardoch can be officially fined! So be warned!

(Ed - Look, this is a tough one, but basically we live in a community and there has to be some agreement to abide by common rules. It's not OK to behave in a selfish way and decide to use space set aside for genuine visitors or - worse - park in someone else's marked spot. This implies an obligation to inform visitors of these rules too. By the way, know how to recognise an Ardochian out for a relaxing stroll?

They're carrying that trusty plastic bag.)



Grounds and gardens

This is one of the times of the year when the gardens are at their best and the weather finally allows us to enjoy them to their fullest.

The village green has been kept free

of the beetle infestation that made it so patchy last year and the whole appearance is a pleasure to the eye. And it looks like another great year for the roses.

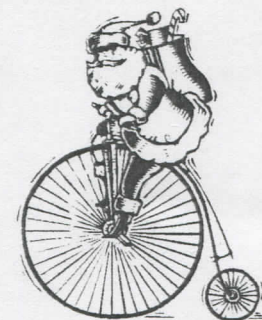
The lavender hedges are a feature of Ardoch and in full bloom. Please feel free to pick from the *dendata* hedges in front of Magnolia Mansions - but carefully, not all from one place, and don't damage the plants! The *dendata* varieties of lavender (so called because of the 'toothed' edges of the leaves) provide good scent and an abundant crop, and are much better for drying than the Italian varieties (the ones with the 'ears' on the flowers) in front of Wardell House and Phoenix Place at the main gate.

We'll be carrying out further deadwooding of trees in December - cleaning up damaged and dead branches. The trees affected will be:

- The camphor laurels between Lark House and Ibis Cottages

- The liquid amber behind Phoenix Place
- The loquat trees behind Red Robin
- The cottonwood tree (the big one!)
- The liquid amber on front of Magnolia Mansions
- The avocado tree (which, alas, never bears fruit) beside Kingfisher Court.

We have also been replanting to fill in some gaps in hedges and other areas, and to establish a permanent hedge along the front fence from the main gate to the old school. This will consist of similar *Pittosporum* shrubs as are used along the rest of the front fence, but with a variegated leaf to match the ones already established.



- Ian Jay

Letters

Racy Rumour Refuted!

Further to Harry Greenberg's 'Ardoch history' article in our October issue (which was based on information from 'The Social History of Ardoch' included in a submission to the Classifications

Committee of the 'Historical Buildings Council' for the City of St Kilda) ... An Ardoch resident who lived here about 60-odd years ago and knew the occupants of the original mansion then, strongly disputes that it was used as an American brothel in World War II. (So there! - Ed)

What's on

Sunday 13th - Motorcycle Riders Toy Run, from the Triangle Site, St Kilda 11-3pm

Sunday 13th - Challenger Triathlon Series White Reserve, 7.30- 8.45am

Tuesday 15th - Doggie Xmas party at Alma park. 4.30 till dark at the rotunda. For more info call June on 9537 2321.

Wednesday 16th - Voters rolls for Local Government Elections closes. Voters must advise the Electoral Commission of any change of address. Local Government elections will be held in March 1999.

Snippets from Wits Dictionary

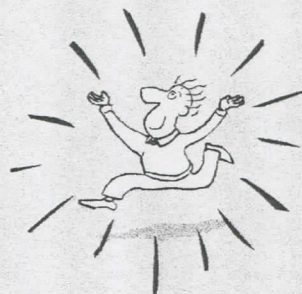
Bank statement - a mathematical confirmation of your suspicions.

Friend - someone who dislikes the same people you dislike.

Shin - a device for finding furniture in the dark.

Words that don't exist but should!

Bozone (n.) The substance surrounding stupid people that stops bright ideas from penetrating. The bozone layer, unfortunately, shows little sign of breaking down in the near future.



Cashtration (n.) The act of buying a house, which renders the subject financially impotent for an indefinite period.

Intaxication (n.) Euphoria at getting a tax refund, which lasts until you realize it was your money to start with.

Ardoch living

Marge's Best Ever Christmas Cake

Now I doubt any of you will want to go to the extremes Marge does - she assures me an Ardoch oven will accommodate six cakes at once! - but apparently this is the best recipe she has ever come across in all her years of Christmas baking experience!

Cut up 250 g. butter into a saucepan and add 1 kg dried mixed fruit, 2 tablespoons Grand Marnier or ordinary brandy, and 1 cup brown sugar. Heat slowly with the lid on for about 5 mins, stirring a few times to ensure it doesn't burn.

Take off the stove, remove the lid and allow to cool for about 5 mins. In a separate bowl, whisk 4 eggs with 2 teaspoons of vanilla essence. And in another bowl, sift 1 cup plain flour, 1 teaspoon baking powder, 1 teaspoon nutmeg and 2 teaspoons cinnamon. Add eggs to the fruit mixture and mix. Add the flour and mix.

Put into a greased, lined 20cm cake tin and bake in a pre-heated oven at 150 degrees for up to 1 hour 30 mins. Remove and cool on a wire rack. After about 30 mins, when the cake is about half cool, prick all over with a skewer, and sprinkle over a further 2 tablespoons of brandy.

And then ENJOY!!!



A hat trick for summer

Enjoyed 'Angela's Ashes'? Follow on with the memoirs of the brother in 'A Monk Swimming' by Malachy McCourt.

It's entirely different. So much for the nature/nurture argument!

Another autobiography, set in the early 1900s in rural France, 'A Wild Herb Soup' is the life of Emilie Carles - survivor. Her opening words: 'When I was six death wouldn't have me'.

Solid, in size, scope and interest, A. S. Byatt's 'Possession'. It's at once a love story and a mystery of intellect and intrigue. Undefinable. Read it and see: -Jenni W.

Apartment touch ups

If you need to touch up the paint in your older style apartment, the original colours are:

Lounge, dining, kitchen, hall and bedroom walls - Low Sheen Bristol Spumante (6050).

Windows, arches, skirting boards - Semi Gloss Bristol Spumante (6050).

Ceilings are Matt Finish 1/2 tone Bristol Spumante (6050).

Bathroom and laundry walls and ceilings - Semi Gloss Dulux White on White. Windows, arches etc - Full Gloss Dulux White on White.



Some people may have repair materials and/or tools they are willing to share. I have some Spumante touch up paint, very fine crack filler for walls and water-resistant crack filler for bathrooms that people are welcome to use. Anyone got other useful stuff to share?

Lost and found

Found - narrow silver ring, engraved with 'Best Friend' on the outside. Found near the pool. Call Meredith on 9530 2954

Useful contacts

For most inquiries about the operation of the Body Corporate, call Alan Hollibone, General Manager of Strata Title Flat Management, our Body Corporate management firm, on 9866 6167.

For matters to do with Port Phillip City Council (rubbish collection, stray dogs,

community services etc), call 9209 6777.

Or check them out on the Net at ... assist@portphillip.vic.gov.au

If you're interested in local government matters (strategic planning, heritage, environment etc), call our local councillor, Freda Erlich, on 9534 9192.

